

# MONTHLY MEMBERSHIP PROGRESS REPORT

LOCATION ILLINOIS

District 1 D

Results as of: 3/31/2021

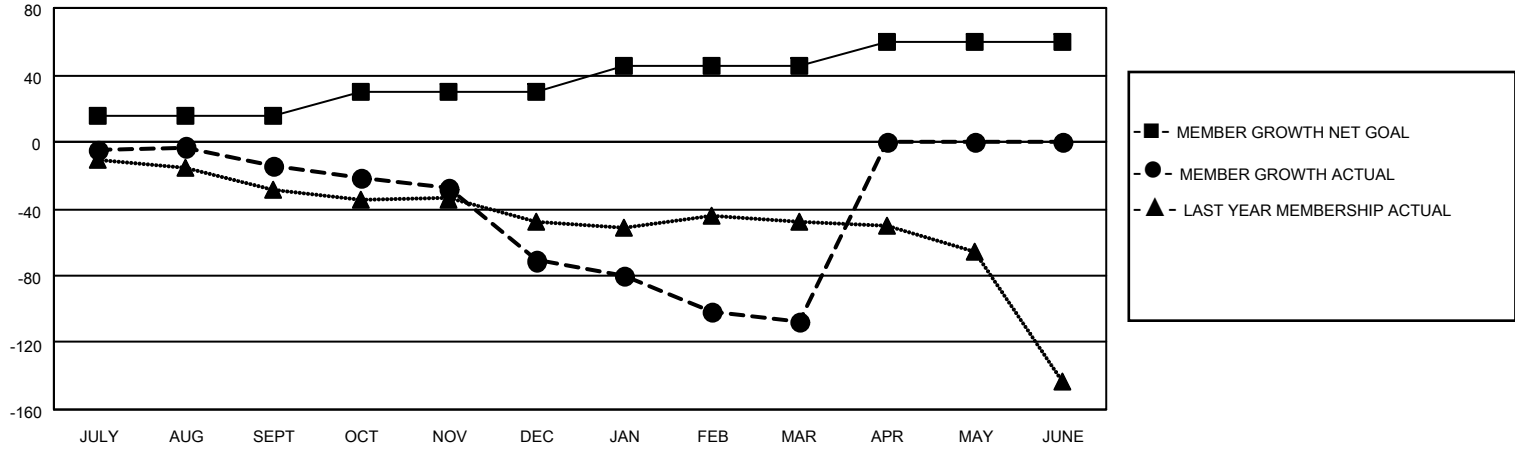
Clubs			
RESULTS FOR 2020-2021			
QUARTER	NEW CLUB GOAL	NEW CLUBS	DROPPED CLUBS
JULY/AUG/SEPT	0	0	0
OCT/NOV/DEC	1	0	0
JAN/FEB/MAR	0	0	3
APR/MAY/JUNE	0	0	0

Members			
RESULTS FOR 2020-2021			
QUARTER	MEMBER GROWTH NET GOAL	MEMBER GROWTH ACTUAL	DROPPED MEMBERS ACTUAL (including transfers)
JULY/AUG/SEPT	15	20	29
OCT/NOV/DEC	15	14	61
JAN/FEB/MAR	15	26	57
APR/MAY/JUNE	15	0	0

**GOALS AND ACTUAL NEW CLUBS CUMULATIVE**



**GOALS AND ACTUAL MEMBERS CUMULATIVE**



**DROPPED CLUBS: 3**

17 CLUBS OF 53 ADDED 1 OR MORE NEW MEMBERS

<u>GENDER DISTRIBUTION</u>	
MALE	1,133 (72.72%)
FEMALE	425 (27.28%)

<u>DROPPED MEMBERS</u>	
DECEASED	16
CLUB CANCELLED	18
OTHER	113
<b>TOTAL</b>	<b>147</b>

[CLICK HERE FOR CUMULATIVE MEMBERSHIP DATA](#)

TOTAL FAMILY UNIT MEMBERS	240
FAMILY MEMBERS PAYING HALF DUES	121